

7.3.1 Portray the performance of the Institution in one area distinctive to its priority and thrust

CONTRIBUTION TO HEALTHY AND HARMONIOUS SOCIETY THROUGH HEALTHCARE AND ENVIRONMENT CONSCIOUSNESS INITIATIVE

Our organization's initiatives aim to instill in students a sense of responsibility and ethics, preparing them to become capable healthcare professionals and responsible citizens.

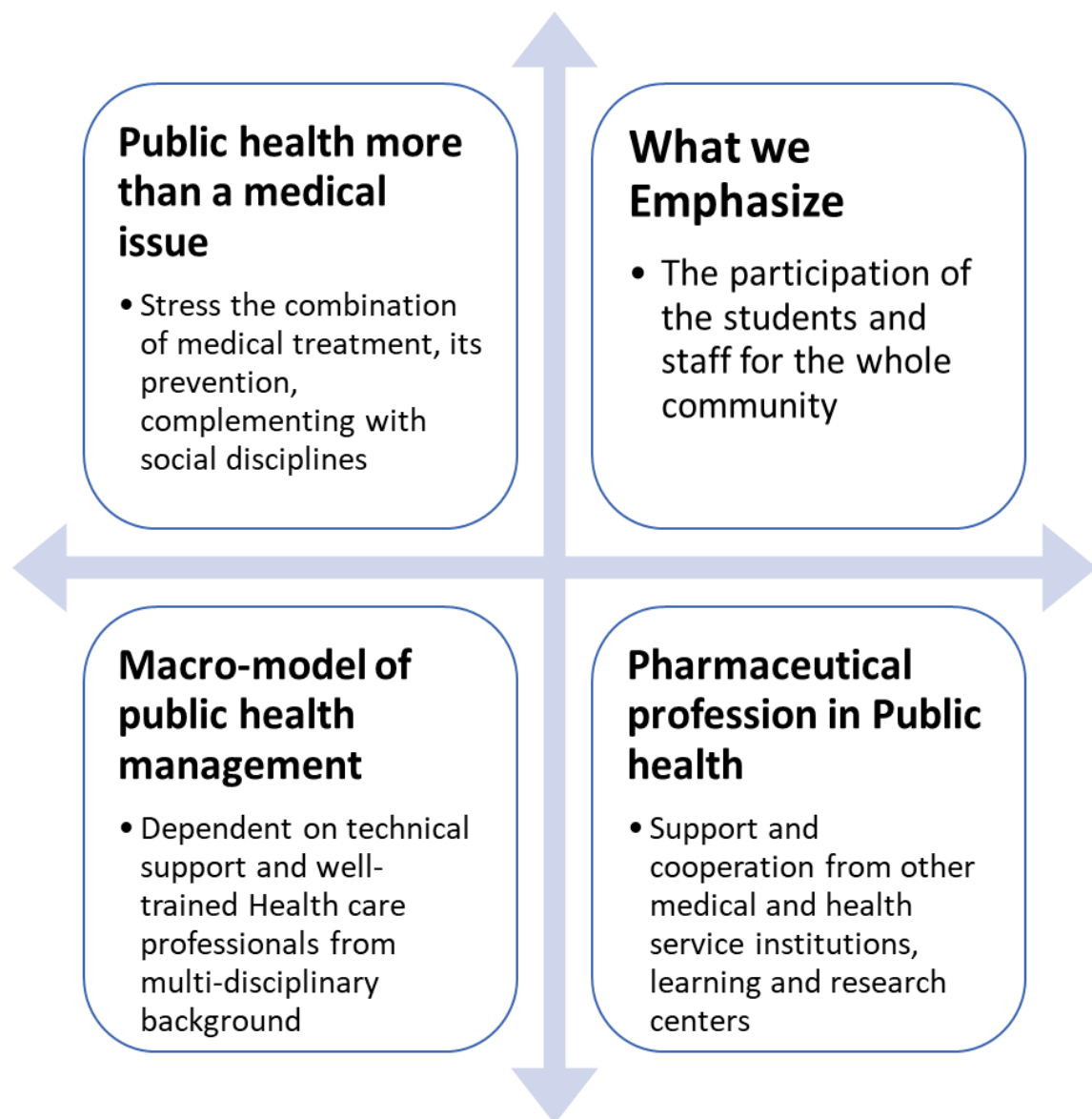


Figure 1: Public Health from VESCOP's Perspective

As a signatory, VES is dedicated to upholding the seven principles of PRME (Principles for Responsible Management Education), a UN initiative focused on environmental protection. In addressing societal contributions aligned with the Sustainable Development Goals (SDGs), we have considered two key factors.



Figure 2: Conscientious Approaches contributing to a healthy & harmonious society

1. Community Clubs:

Objective: Promoting students' moral growth and a thriving, healthy and harmonious global society

Outcome: Five distinct but related programs that address students' moral growth and a healthy and harmonious society globally, namely **Public Health Office, Rotaract Club, Department of Life Long Learning & Extension, National Service Scheme, Green club (as per MoU of DTE and UNICEF), Health Cell and Aarogyadaan**

2. Curriculum based learning:

Objective: Instilling values and habits in students that empower them to make informed decisions regarding their social responsibilities and commitments.

Outcome: This covers areas like Universal Human Values (UHV), Environmental Science, Poster Club Activity, and Communication Skills. This holistic dual strategy demonstrates our organization's commitment to advancing environmental sustainability, public welfare, and effective healthcare delivery.

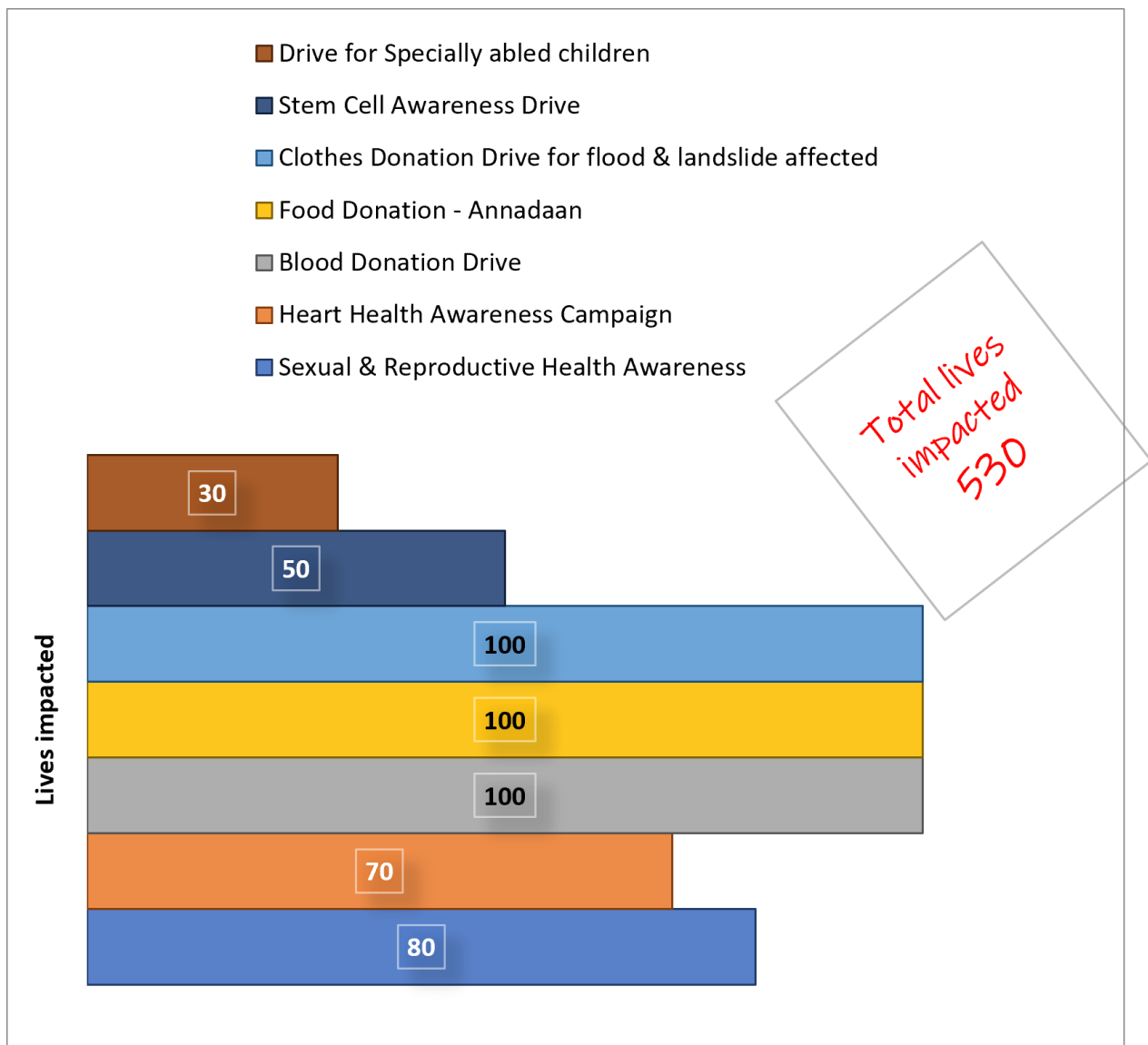


Figure 3: Number of lives directly impacted by our initiatives

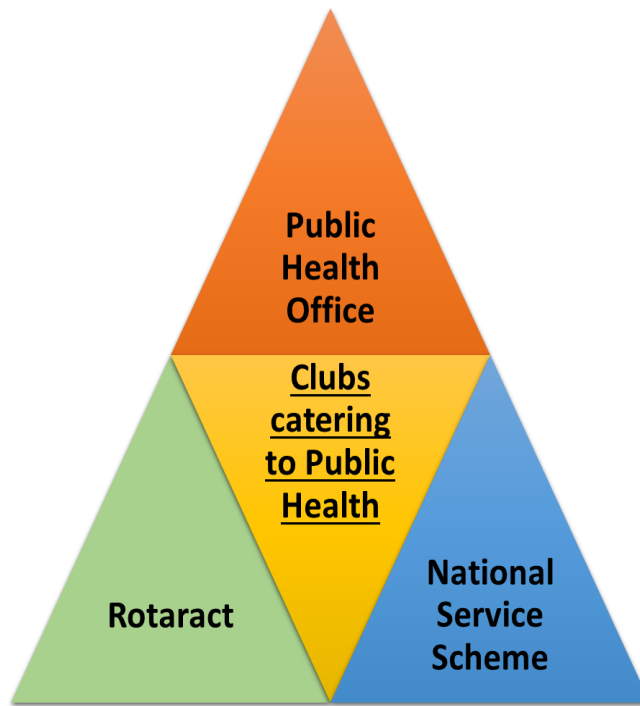


Figure 4: Community clubs catering to public health and harmonious society

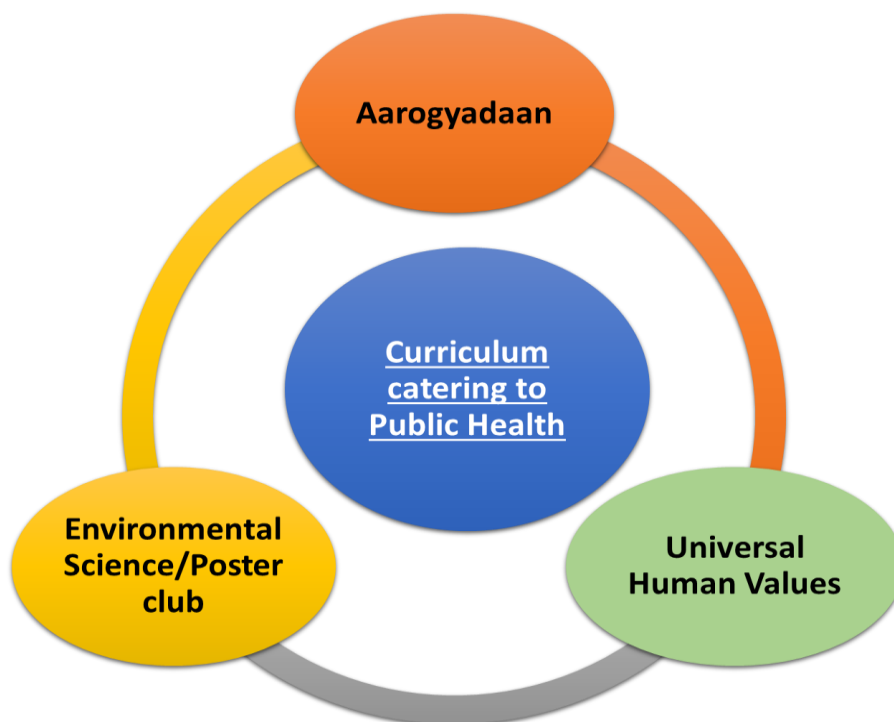


Figure 5: Curriculum catering to public health and harmonious society