



VIVEKANAND EDUCATION SOCIETY'S COLLEGE OF PHARMACY

Hashu Advani Memorial Complex, Behind Collector Colony, Chembur (E), Mumbai – 400 074

Sindhi Linguistic Minority, Approved by AICTE, DTE, Pharmacy Council of India & Govt. of
Maharashtra, Affiliated to University of Mumbai

B. Pharm Programme is accredited by NBA, New Delhi from 2016-17 to 2021-22

2.3.1

**Students centric methods such as
experiential learning, participative
learning and problem solving
methodologies are used for enhancing
learning experiences**



INDEX

Sr. No	Particular
2.	C2C VIDNYAN MANCH 2021-22
3.	C2C ATMAVIKAS 2021-22
4.	WDC 2021-22
5.	INDUSTRIAL VISIT 2021-22
6.	ADD ON COURSE 2021-22
7.	POSTER CLUB ACTIVITY 2021-22
8.	PHO 2021-22
9.	JCA 2021-22
10.	ANNUAL LECTURE SERIES 2021-22
11.	DISHA 2021-22
12.	DLLE 2021-22
13.	IIC 2021-22

Photograph of activities 2021-22

C2C VIDNYAN MANCH

The screenshot shows a Zoom meeting window with a presentation slide titled "Simulation". The slide features a human figure with various drug administration routes labeled: Ocular, Oral Cavity, Pulmonary, Dermal, Oral, and IM & SC Injections. A video thumbnail of a participant named Deepak Singh is visible on the right side of the meeting interface.

The screenshot shows a Zoom meeting window with a presentation slide titled "The Generic Product Development Process". The slide displays a flowchart with the following stages and durations:

- Product Selection & Development • 6 Months
- Pilot BE Studies • 6 Months
- Batch Scale-up • 3 Months
- Pivotal BE Study • 3 Months
- ANDA Filing & Review • 24 Months

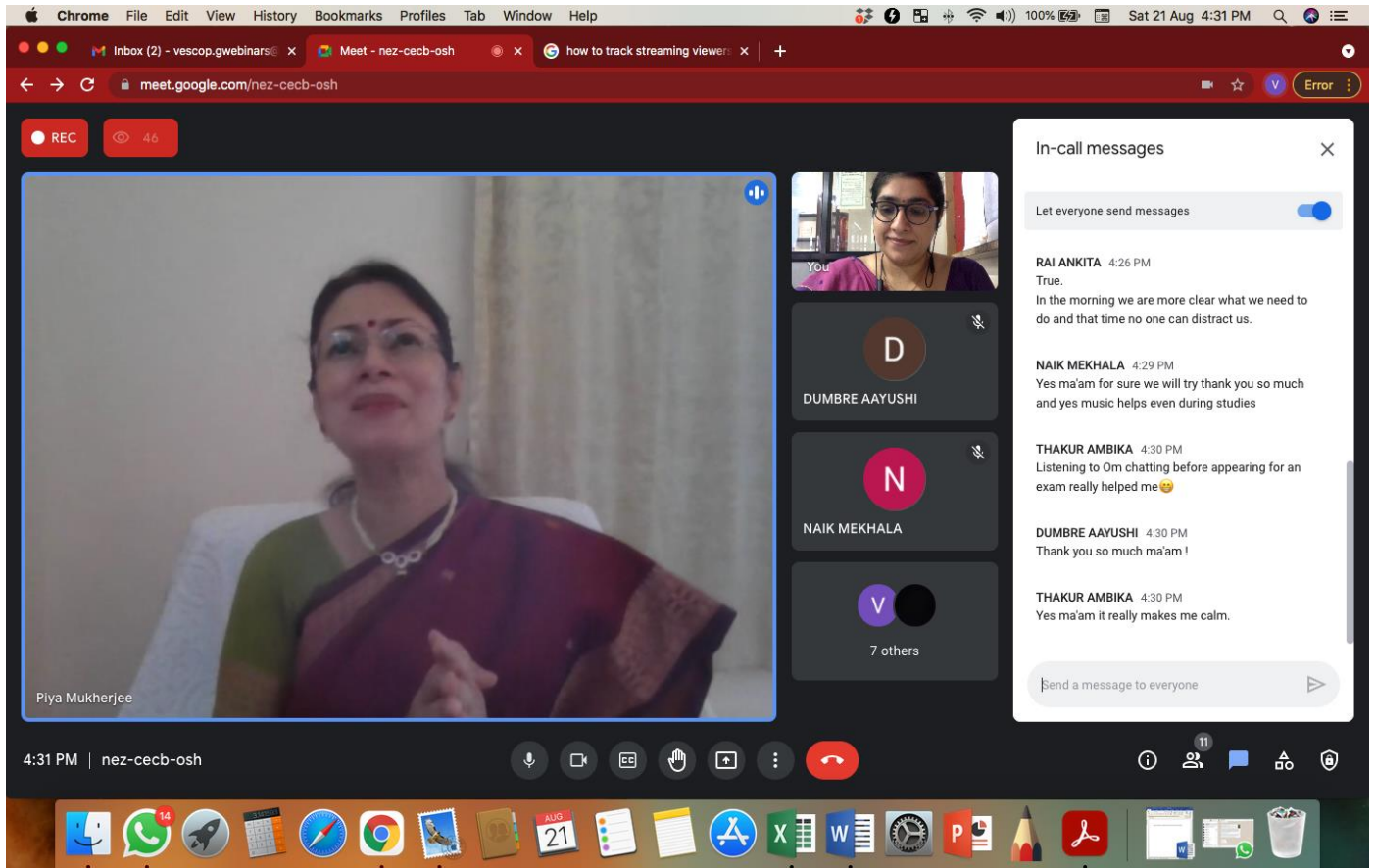
Annotations on the slide include:

- A red arrow pointing from "Product Selection & Development" to "Pilot BE Studies" with the text: "Failing here multiple times can cause significant delays".
- Text next to "Batch Scale-up": "Missing 'specifications' can be costly".

A video thumbnail of a participant named Deepak Singh is visible on the right side of the meeting interface.

Photograph of activities 2021-22

C2C ATMAVIKAS



Photograph of activities 2021-22

WDC



Webinar on Menstrual He...

LIVE 28:15

During puberty, hormones also lead to emotional and behavioral changes

```
graph TD; A[Peer pressure] --> C((EMOTIONAL AND BEHAVIOURAL CHANGES)); B[Mood swings] --> C; D[Being conscious about self] --> C; E[Very emotional and sensitive] --> C; F[Looking for an identity / Being carried away] --> C;
```

Very emotional and sensitive

Looking for an identity / Being carried away

Peer pressure

Mood swings

Being conscious about self

EMOTIONAL AND BEHAVIOURAL CHANGES

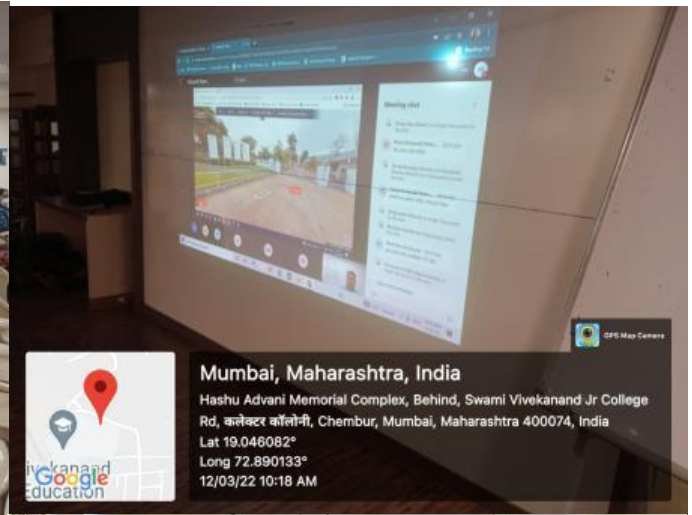
Copyright (c) 2019 by TheBarn Corporation. All rights reserved.

Kindly post your questions in chatbox.

Kindly post your

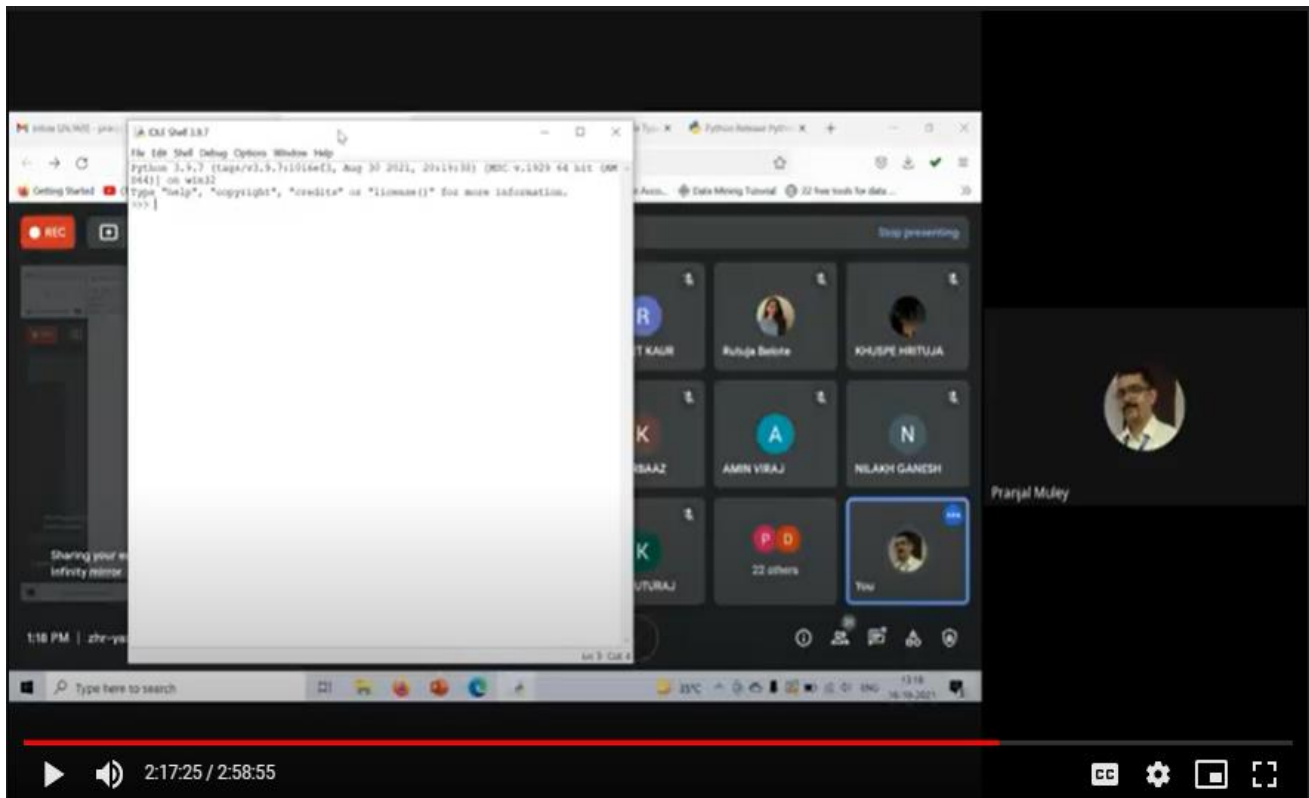
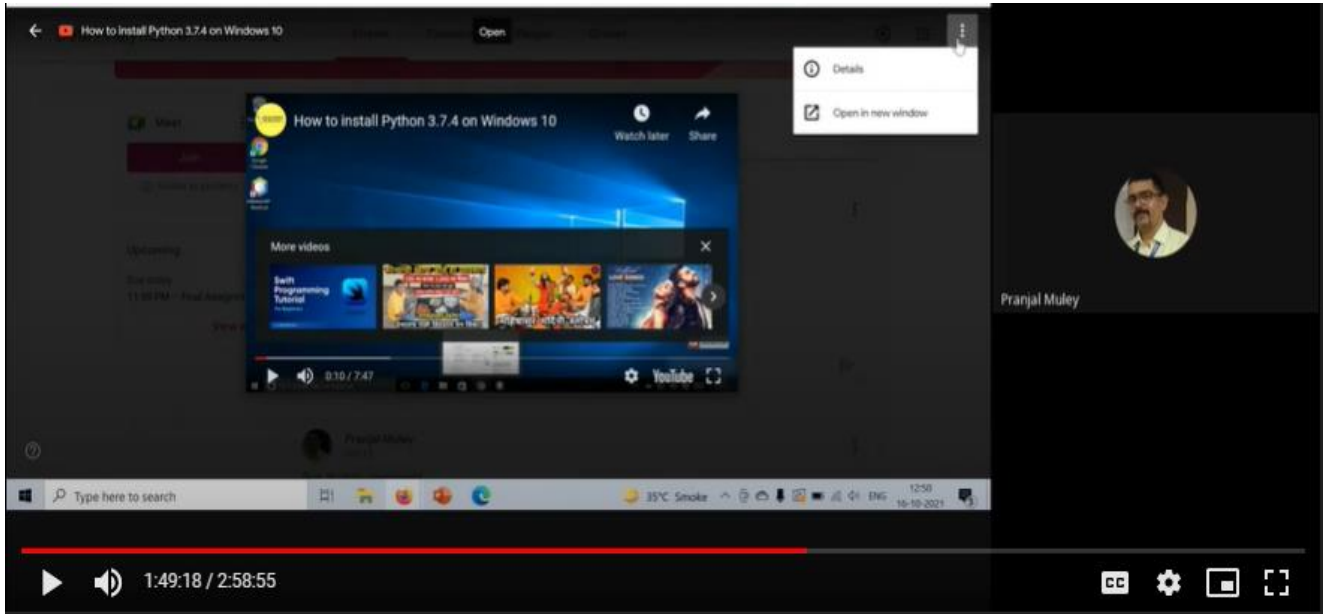
Photograph of activities 2021-22

INDUSTRIAL VISIT



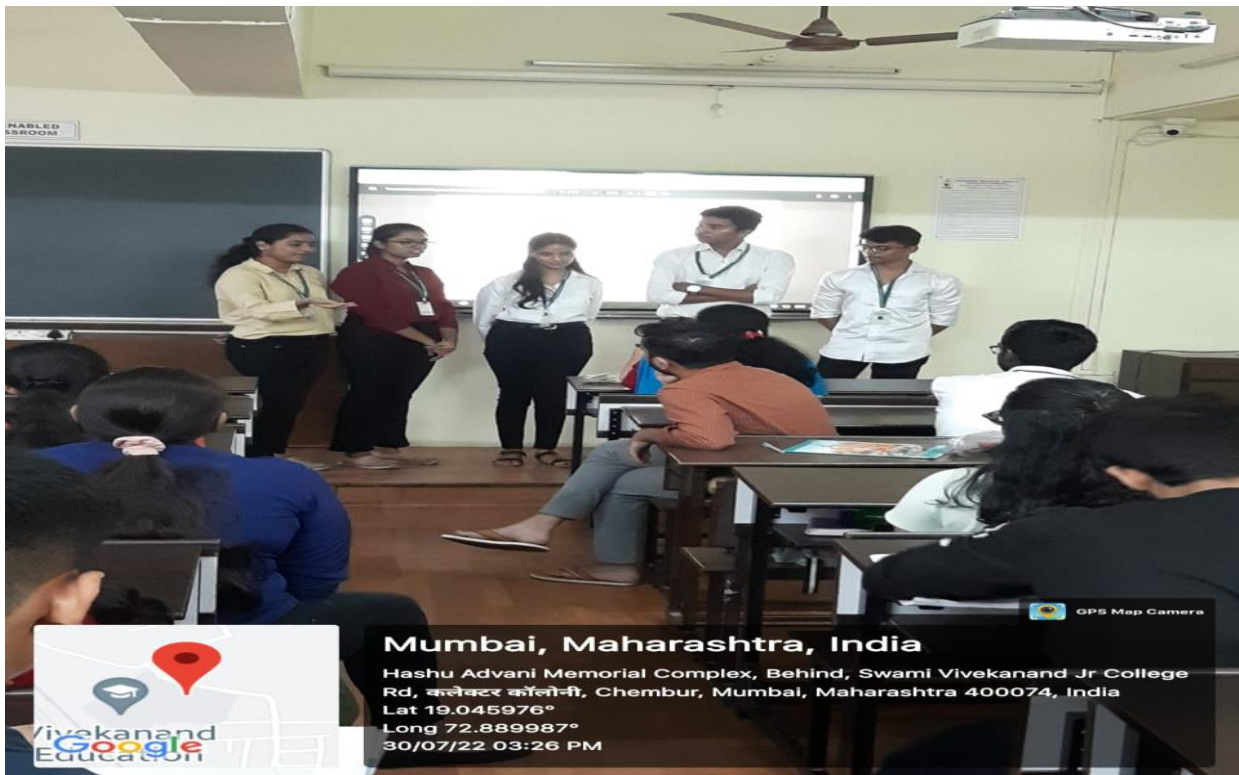
Photograph of activities 2021-22

ADD ON COURSE



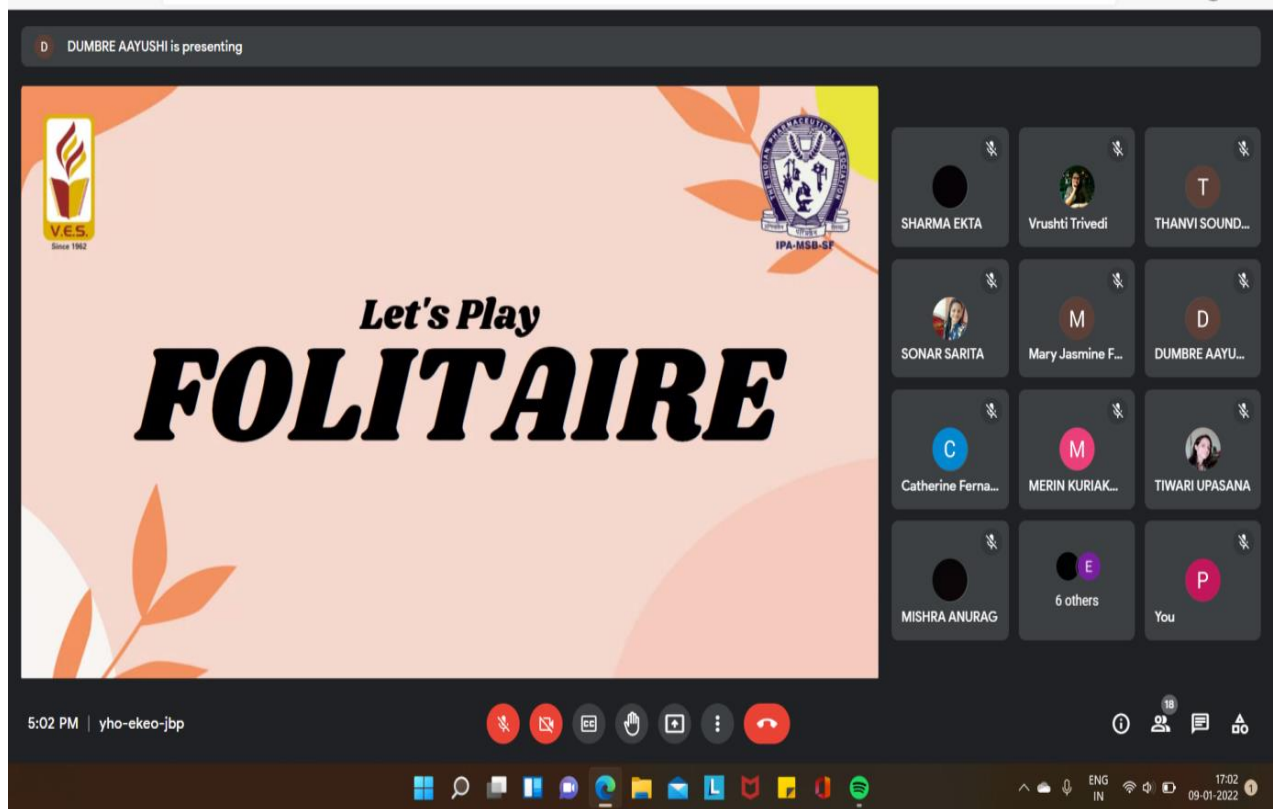
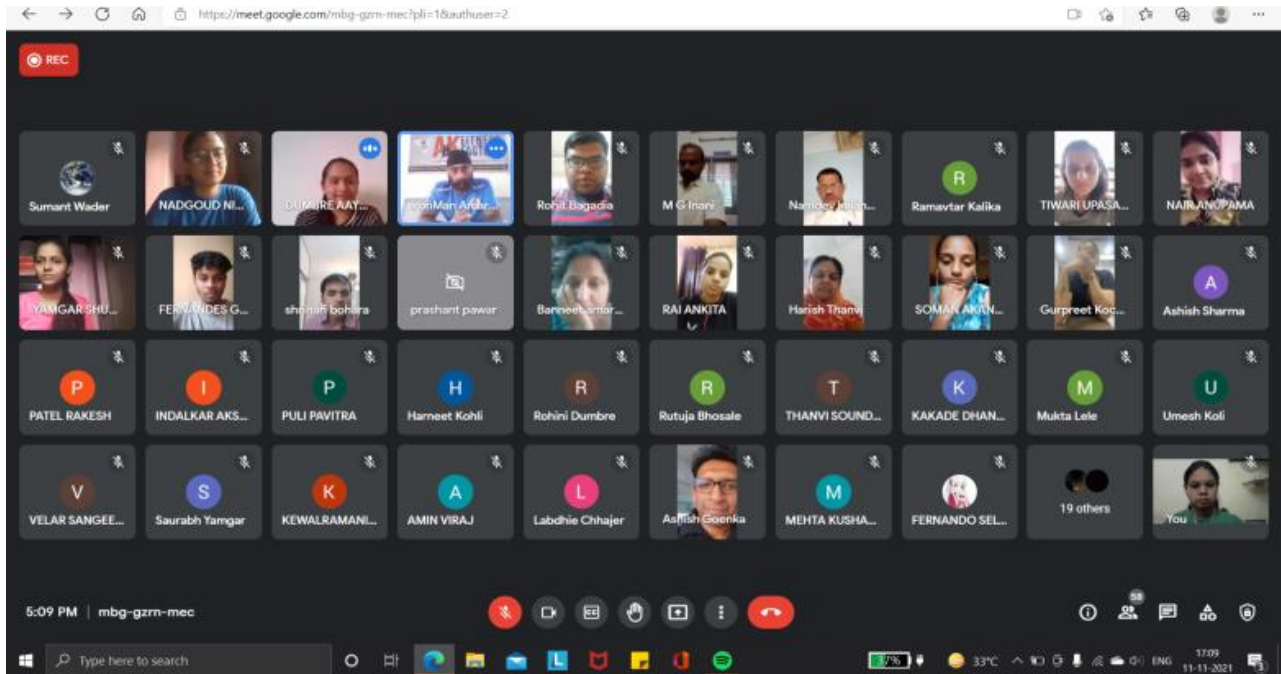
Photograph of activities 2021-22

POSTER CLUB ACTIVITY



Photograph of activities 2021-22

PHO



Photograph of activities 2021-22

JCA

INTRODUCTION

- Lantana Camara (Family- Verbanaceae) is a low, erect shrub.
- Grows to 2 - 4 meters in height. Leaves are bright green, rough, finely hairy with serrate margins and emit a pungent odor when crushed.
- Since very long time Lantana camara.L has been reported to be used in traditional medicine system for itches ,cuts , ulcers, swelling, bronchitis and arterial hypertension.



5

FORMULATION AND DEVELOPMENT

1. pH

- The PH should be adjusted between 5-7 and should mimic the skin
- If acidic or basic can cause irritation of the skin
- A PH meter is used to measure the Ph and is taken in a form of triplicate then average is taken

2. Rheological Studies

- It is basically carried out to get an idea of how viscous is the emulgel and a Brookfield Viscometer is used so as to get accurate observations
- A spindle of no 42 was used in the process and the speed was maintained at 0.5 and 1 r/min

3. Spreadability

- Spreadability denotes the extent of area to which the emulgel readily spreads on application to skin or the affected part.
- It also gives an idea of the bioavailability efficiency of an emulgel.
- It is expressed in terms of time in seconds taken by two slides to slide over each other.



7

Photograph of activities 2021-22

ANNUAL LECTURE SERIES



Photograph of activities 2021-22
CAMPUS TO CORPORATE TRANSITION DISHA



Photograph of activities 2021-22

DLLE



Mumbai, Maharashtra, India

Hashu Advani Memorial Complex, Behind, Swami Vivekanand Jr College Rd, कलेक्टर कॉलोनी, Chembur, Mumbai, Maharashtra 400074, India

Lat 19.045945°

Long 72.889969°

12/03/22 04:31 PM

Photograph of activities 2021-22

IIC

